



MONTHLY MEMBERSHIP PROGRESS REPORT

District 11 B2

Results as of: 08/31/2017

GMT: STEVE ANTON

LOCATION MICHIGAN

GMT CA

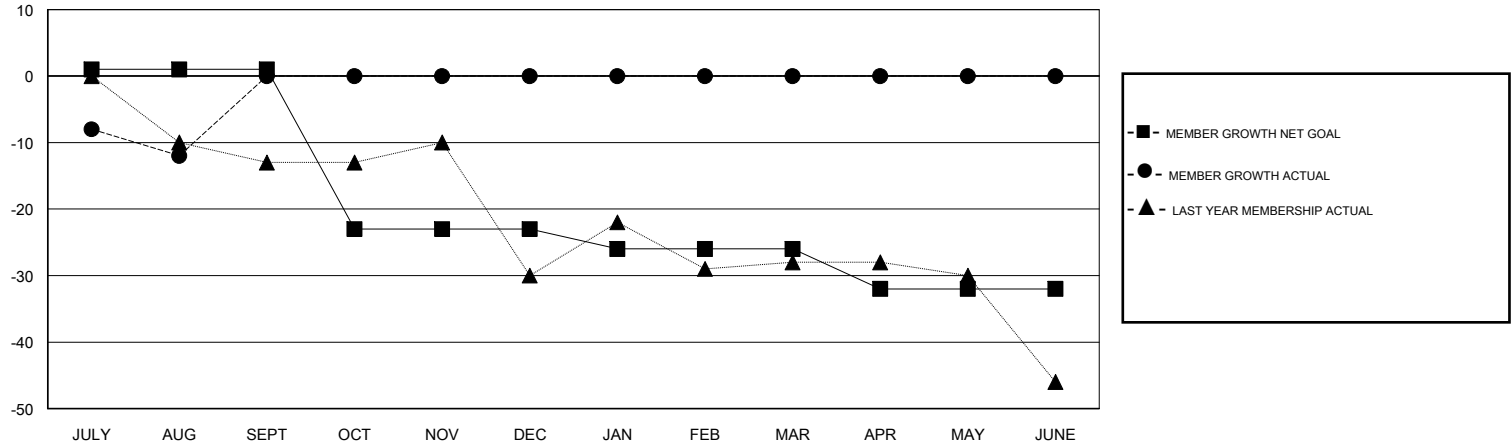
Clubs			
RESULTS FOR 2017-2018			
QUARTER	NEW CLUB GOAL	NEW CLUBS	DROPPED CLUBS
JULY/AUG/SEPT	0	0	0
OCT/NOV/DEC	0	0	0
JAN/FEB/MAR	0	0	0
APR/MAY/JUNE	0	0	0

Members			
RESULTS FOR 2017-2018			
QUARTER	MEMBER GROWTH NET GOAL	MEMBER GROWTH ACTUAL	DROPPED MEMBERS ACTUAL (including transfers)
JULY/AUG/SEPT	1	7	19
OCT/NOV/DEC	-24	0	0
JAN/FEB/MAR	-3	0	0
APR/MAY/JUNE	-6	0	0

GOALS AND ACTUAL NEW CLUBS CUMULATIVE



GOALS AND ACTUAL MEMBERS CUMULATIVE



DROPPED CLUBS: 0	5 CLUBS OF 37 ADDED 1 OR MORE NEW MEMBERS	<u>GENDER DISTRIBUTION</u>	
DROPPED MEMBERS		MALE	679 (69.29%)
DECEASED	4	FEMALE	301 (30.71%)
CLUB CANCELLED	0	Women Percentage Fiscal Year Goal: 30%	
OTHER	15	CLICK HERE FOR CUMULATIVE MEMBERSHIP DATA	
TOTAL	19	TOTAL FAMILY UNIT MEMBERS	234
		FAMILY MEMBERS PAYING HALF DUES	118